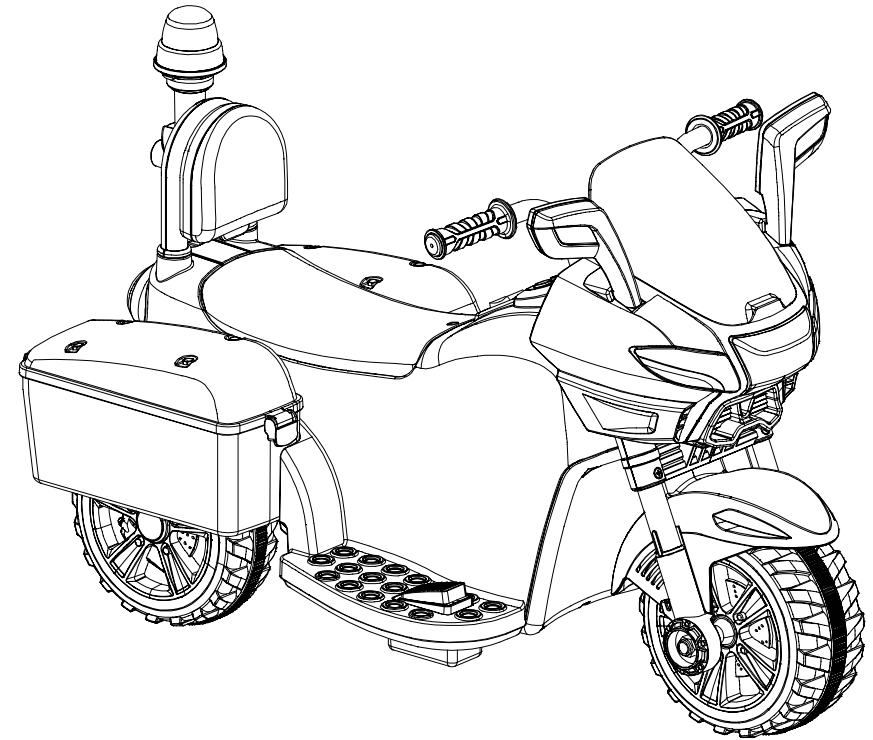


Disposal Of Battery

- Your sealed lead-acid battery must be recycled or disposed of in an environmentally sound manner.
- Do not dispose of your lead-acid battery in a fire. The battery may explode or leak.
- Do not dispose of a lead-acid battery in your regular, household trash. The incineration, land filling or mixing of sealed lead-acid batteries with household trash is prohibited by law.
- Return an exhausted battery to your local approved lead-acid battery recycle, such as a local seller of automotive batteries.
- Contact your local waste management officials for other information regarding the environmentally sound recycling and disposal of lead-acid batteries.
- The battery must be charged only by adult .Please charge the product before using!
- The toy should not be connected to excessive powers (more than the quantity specified herein), and it should not be operated during charging process.
- Any rechargeable battery must only be charged under adult's supervision.
- Battery charger should regularly check the wires, plugs, casing and other parts for damage and if found should stop using and restored.
- All batteries should be inserted with the correct polarity.
- The battery charger used with the toy are to be regularly examined for damage to the cord, plug, enclosure and other parts, in the event of such damage, they must not be used until that damage had been repaired.



Police Trike



Important	Warning!
Age: 2 years + Maximum user weight: 25kg	1. Warning! Protective equipment should be worn 2. Not to be used in traffic 3. Adult assembly required 4. This toy has no brake



Important - Please read these instructions fully before assembly or use

These instructions contain important information which will help you get the best from your product and ensure safe and correct assembly, use and maintenance.

If you need help or have damaged or missing parts, call the Customer Helpline: 01253775570

Please read the instructions fully before use.

Failure to do so may result in damage to the vehicle or harm to the user.

Please keep this handbook for future reference.



Designed & Manufactured by HTI Toys, Copse Road, Fleetwood, FY7 7NY – UK
Please retain these details for future reference. Made in China

● Safety Information

Assembly & User Instructions - Please keep for future reference

General safety

Assembly & User Instructions - Please keep for future reference

- Where products need assembly they must always be assembled by an adult. As a parent/carer, it is also your responsibility to check the tightness of screws, nuts and bolts before each use and if necessary, adjust and re-tighten.
- Remove protective material and poly bags and dispose of them responsibly before giving the assembled product to your child.
- Remember to retain these instructions for future reference.
- We have tried to make our toys as simple as possible to assemble but inevitably there will be one or two slightly more complex tasks. If you have any difficulties assembling your product, please contact us for advice.
- Please contact your retailer for information about end-of-life recycling under the EU WEEE regulations.

Positioning

- Do not allow your child to ride at night or in poor light conditions.
- Do not let your child play near steps, swimming pools / spas or other sources of water, on slopes, on streets or around cars, even if parked on your own property.
- It is prohibited to drive/use this product on the public highway.
- This product is designed to be used on smooth surfaces and should not be used on soft ground or in the rain or snow.

Before use

- Very Important. You Must Charge & Connect The Battery Before First Use. Please refer to "assembly instruction" on page 5 & "charging the 6V battery" on page 8.
- Dispose of all packaging material responsibly before giving this product to your child.
- Check tightness of all components before giving this product to your child.

During use

- This product is only suitable for children 2 years and older.
- The toy should be used with caution since skill is required to avoid falls or collisions causing injury to the user or third parties.
- The maximum rider weight capacity for this product is 25Kg do not overload.
- Adult supervision is highly recommended when children play with wheeled toys. Your child's safety is your concern.
- Do not allow the child to ride with bare feet or without suitable footwear.
- Ensure the child keeps clothing, hands, hair, fingers and feet away from moving parts.
- The use of protective gear including approved helmets, gloves and pad is recommended.
- Store this product at room temperature; do not leave it outside or uncared for.
- Never let any child play with the battery or charger at any time, or let them charge the product.
- Do not use if product is faulty or damaged.
- Do not tamper with the battery or electrical parts inside the product.

● Assembly Steps

Assembly & User Instructions - Please keep for future reference

Charging the 6v battery

Assembly & User Instructions - Please keep for future reference

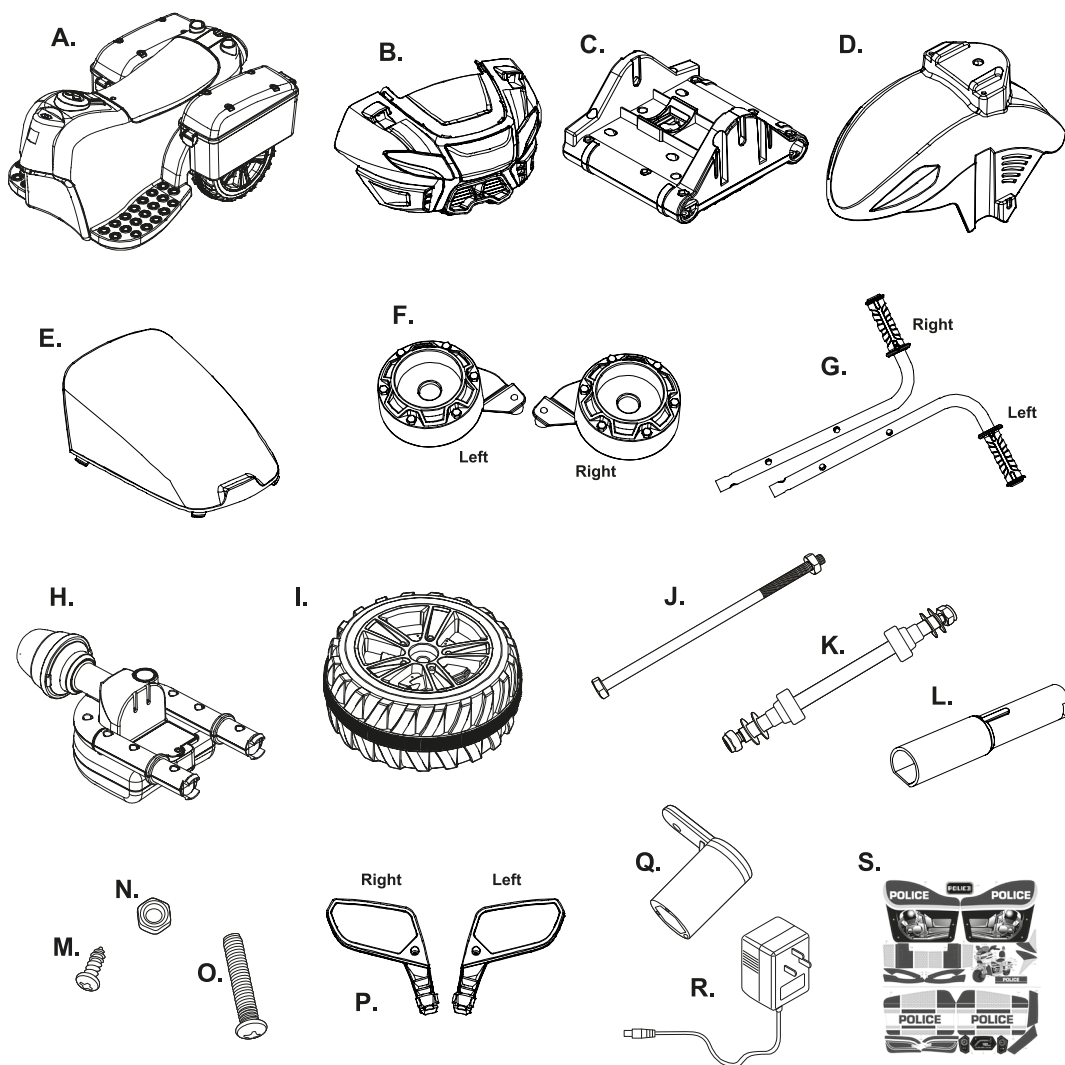
- All charging and re-charging must be carried out by an adult.
- Do not attempt to use the product while it is being charged.
- Charging should be carried out under cover and in a well-ventilated area.
- Always ensure the charger is switched off before connecting it to the product/battery.
- Always ensure the charger is plugged into a wall outlet, Do not use an extension.
- Do not charge near sources of potential sparks, fires or flames or where flammable gases, liquids and materials are stored.
- During charging the battery and the charger may get hot.
- Only charge the battery for a maximum time of 8 - 10 hours.
- Do not leave the charger plugged into an outlet or connected to the product/battery once charging is completed.
- Never attempt to recharge a fully charged or partially used battery for an extra boost.
- Do not over-charge; this action will significantly shorten battery life.
- Always ensure that once the battery becomes discharged/flat that you re-charge for the recommended time. Failing to do so will significantly shorten battery life.
- Charging the product below 4°C (40°F) or above 40°C (104°F) will decrease the battery life significantly.
- V.R.L.A. batteries are heavy and contain lead & acid. They are dangerous if improperly handled.
- Only use the charger supplied with the product. The use of other chargers may cause damage to the battery and/or cause explosion.
- Battery chargers used with the toy are to be regularly examined for damage to the cord, plug, enclosure and other parts, and in the event of such damage, they must not be used until the damage has been repaired.
- Only use the battery supplied with this product. The use of other batteries may cause damage to the motor, charger and subsequent wiring, which could lead to fire and/or explosion.
- Exhausted batteries are to be removed from the toy.
- Always ensure that you connect the battery with the correct polarity.
- Never short-circuit the terminals of the battery, or any subsequent wiring.
- Never bypass or bridge a broken/blown fuse or circuit breaker and always replace with the same type/value and model.
- Do not replace the battery with any other battery apart from one purchased through the customer helpline (01253775570) or a recommended service centre.

Batteries for Light Pole

- All battery insertion/replacement must be carried out by an adult.
- Be sure to install batteries as instructed.
- Never mix alkaline, standard (zinc-carbon) or rechargeable (nickel cadmium) batteries or mix old and new batteries.
- Do not recharge non-rechargeable batteries.
- Ensure the contact surfaces are clean before installing batteries.
- Remove batteries before storage or when exhausted.
- Rechargeable batteries are to be removed from the toy before being charged.

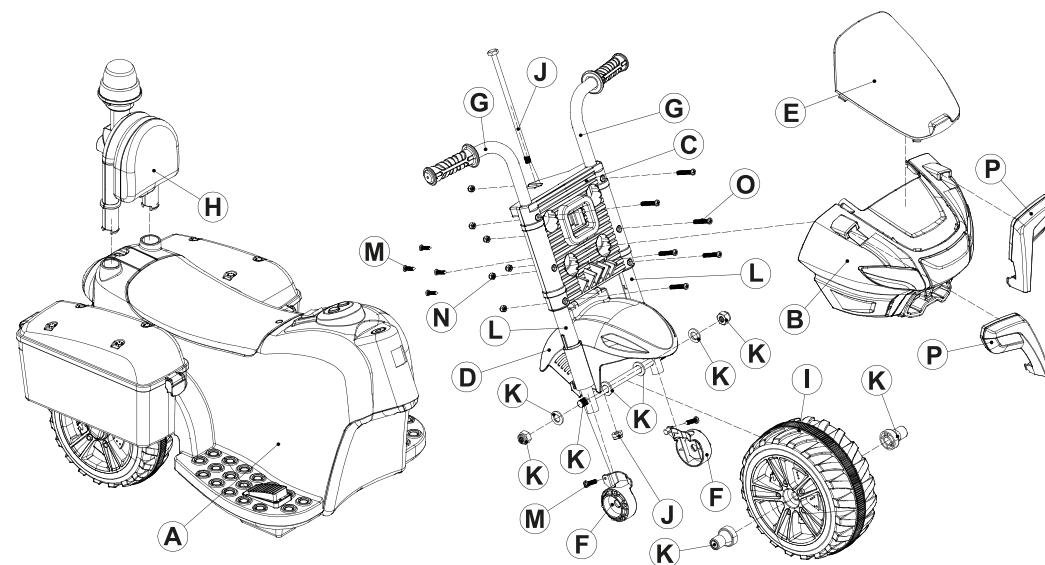
● Parts List

Please check you have all the parts and fittings listed below



- A. Trike Body
- B. Head Cover
- C. Fork Brace
- D. Mudguard
- E. Windshield
- F. Decorative Cover
- G. Handlebar
- H. Back Rest & Light Pole
- I. Front Wheel
- J. M8X170 Bolt
- K. Front Axle
- L. Protective Sleeve (2pcs)
- M. M4X10 Screw (6pcs)
- N. M5 Nut (6pcs)
- O. M5X28 Bolt (6pcs)
- P. Rear View Mirror (2pcs)
- Q. Spanner (2pcs)
- R. Charger
- S. Decal
- T. Instruction Manual

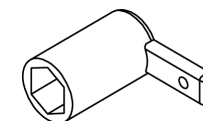
● Parts Diagram



Tools Required



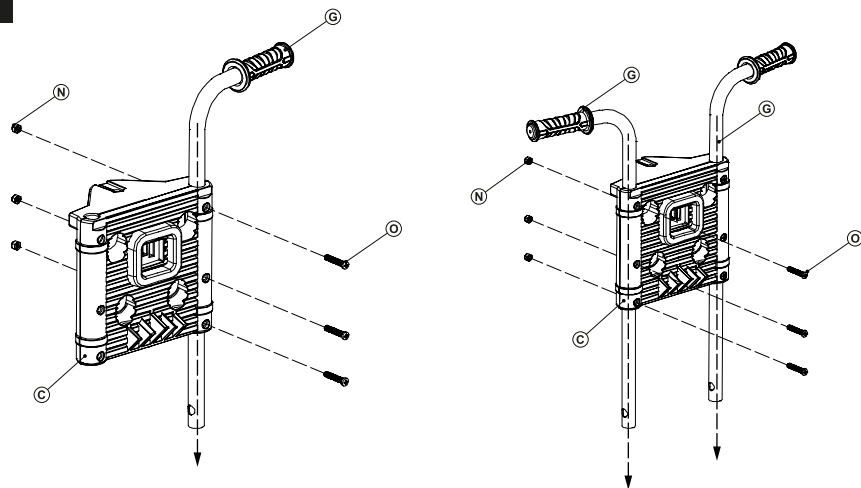
Screwdriver
(not included)



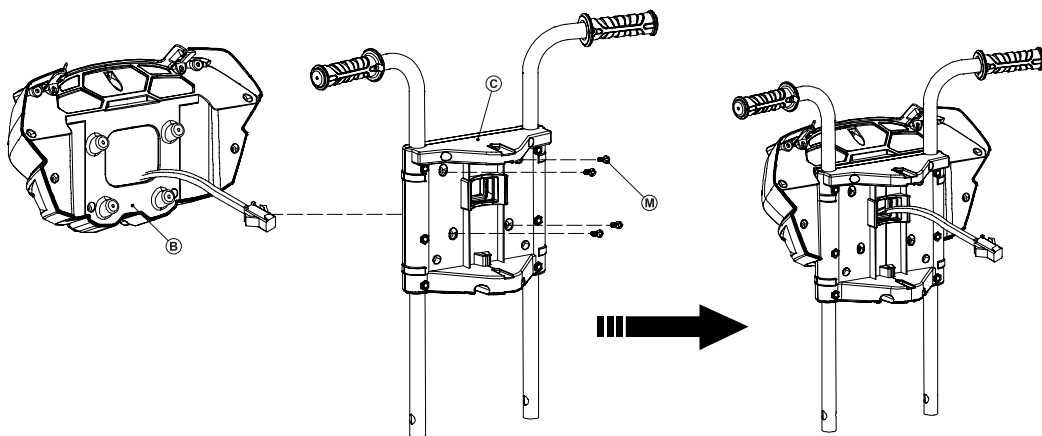
Spanner

● Assembly Instructions

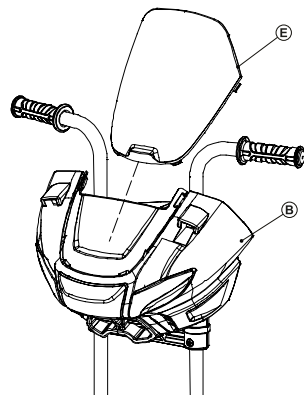
Step 1



Step 2

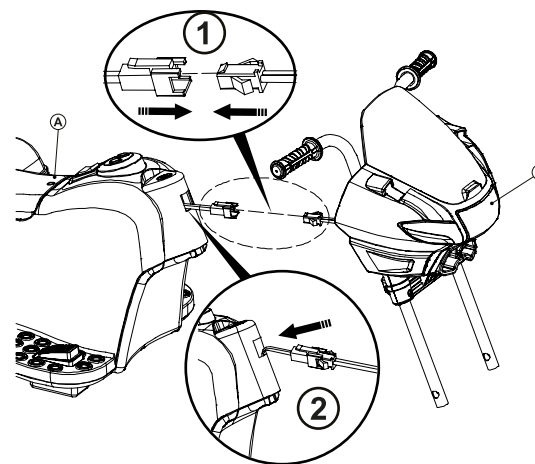


Step 3

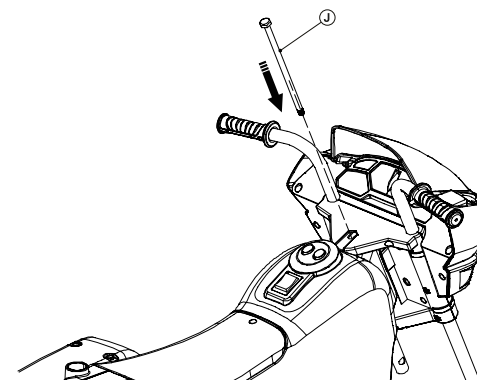


● Assembly Instructions

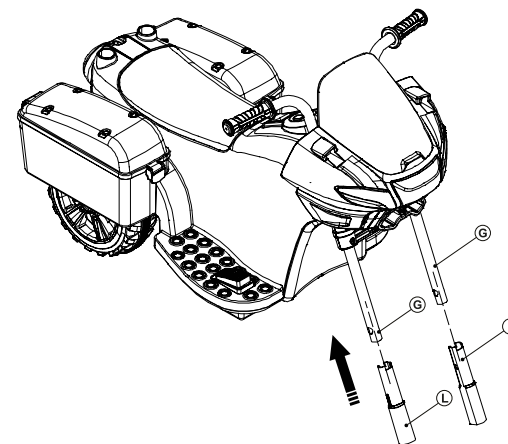
Step 4



Step 5

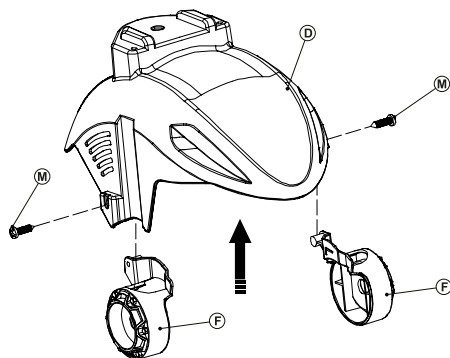


Step 6

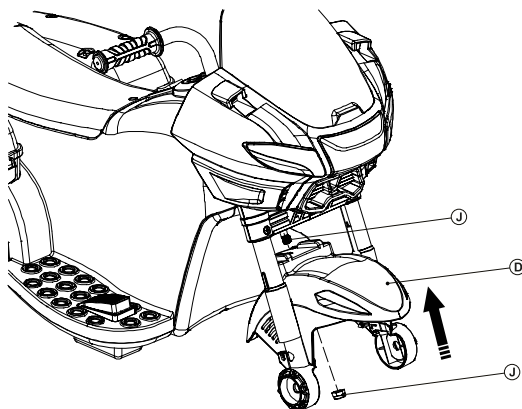


● Assembly Instructions

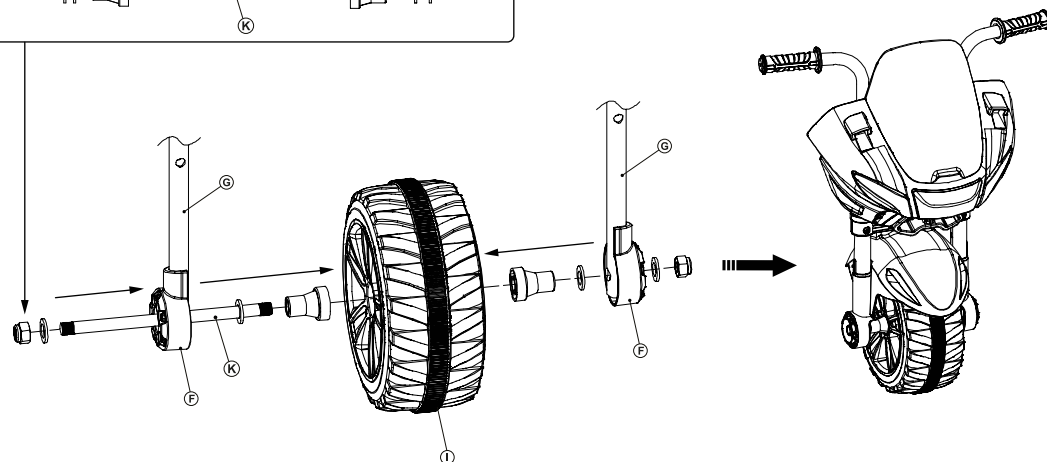
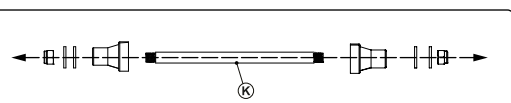
Step 7



Step 8

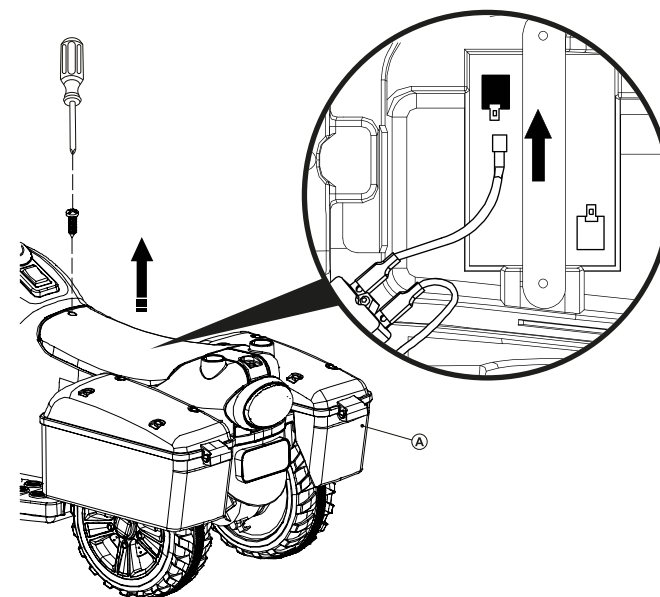


Step 9

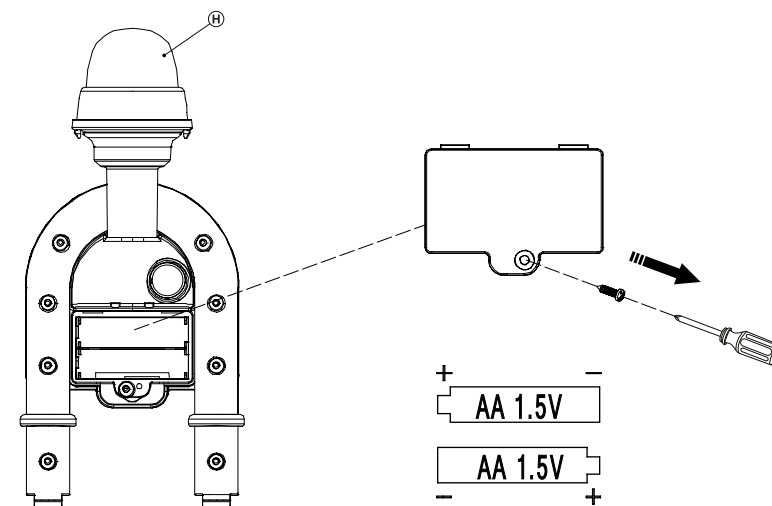


● Charging the 6v battery

Step 10

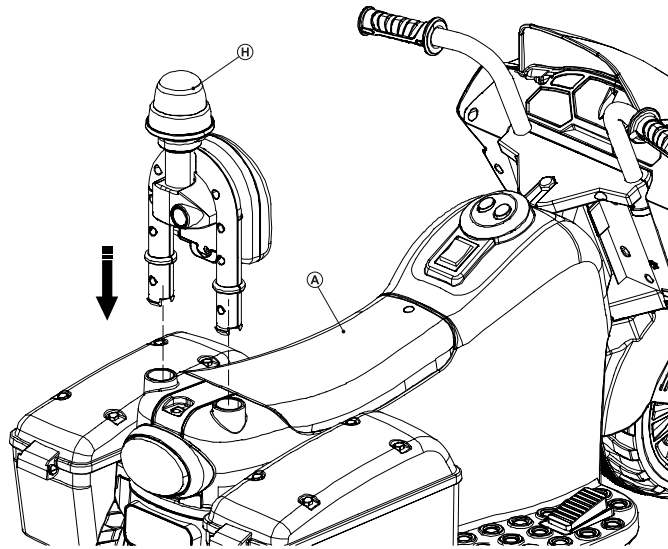


Step 11



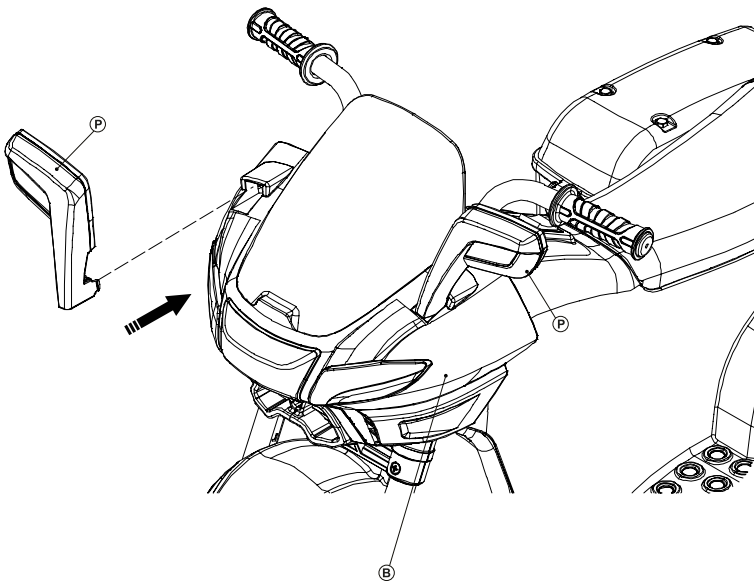
● Charging the 6v battery

Step 12

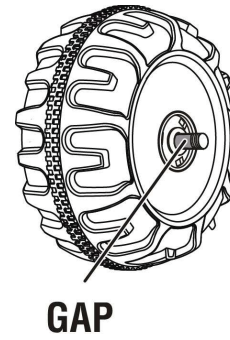


● Assembly Instructions

Step 13



● QUICK CHECK!



After assembling the wheels onto the axles, please check the gap between the screw thread (refer to picture). After tightening the nut outside the wheel, please turn the wheel to check if the wheel can run smoothly. This is very important!

Finally

Finally check tightness of all components and dispose of all packaging material responsibly before giving this product to your child. You will need to charge the trike before you use it for the first time please refer to page 2.

● User Instructions

Forward & Backward

To operate the trike, select a gear from the gear selection switch, there are 3 settings- Forward, neutral/off and reverse.

Once you have selected a gear, depressing the pedal will engage the motor and move the trike in the direction you selected.

If you require to change direction - you must always release the pedal and come to a complete stop before selecting a new gear. Failing to do so will result in damage to the gear selection switch and/or the motor and gear box.

Steering

The handle bars can be used to steer the trike left or right, when in forward motion.

Please note that when the trike is being used in reverse, the controls will also be reversed and some coordination by the driver may be required to keep the trike under control.

Sounds

The sound effects can be operated by the buttons shown.

Lights

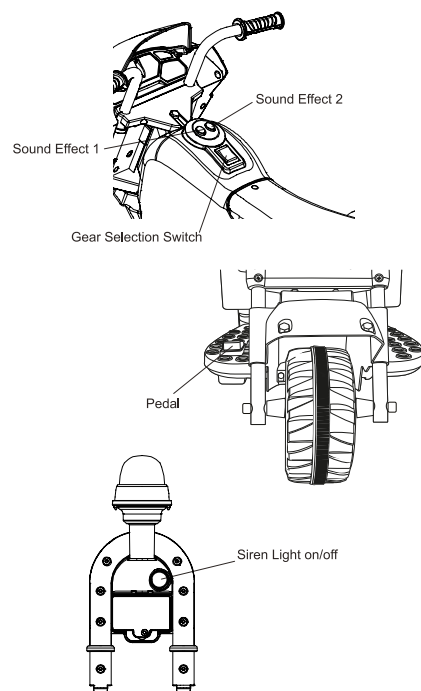
The only working lights are the headlight & the rear siren light on the light pole.

The headlight will only work when the trike is being driven in the forward direction and is automatic.

The rear siren light on the light pole is operated by the button shown on the right.

After Use

When you have finished using the product set the power switch to the neutral / off position.



Non-rechargeable batteries are not to be recharged.

- Different types of batteries or new and used batteries are not to be mixed.
- Batteries are to be inserted with the correct polarity.
- Exhausted batteries are to be removed from the toy.
- The supply terminals are not to be short-circuited.
- Rechargeable batteries are only to be charged under adult supervision.
- Only batteries of the same or equivalent type as recommended are to be used.
Do not dispose of batteries in fire; batteries may leak or explode
Batteries should be replaced by an adult
- The transformers or battery charger used with the toy are to be regularly examined for damage to the cord, plug, enclosure and other parts, and in the event of such damage, they must not be used until that damage has been repaired.

● How To Operate Your Trike

⚠ WARNING!

PREVENT INJURIES AND DEATHS:

- Never leave child unattended. Direct adult supervision is required.
- Always keep child in view when child is on the trike.
- Never use on roadways, near cars, on or near steep inclines or steps, swimming pools or other bodies of water.
- Always wear shoes.
- Always sit on the seat.
- Suitable for age 2+ years; Maximum user weight is 25kgs.

Must confirm before using that the following work has been completed:

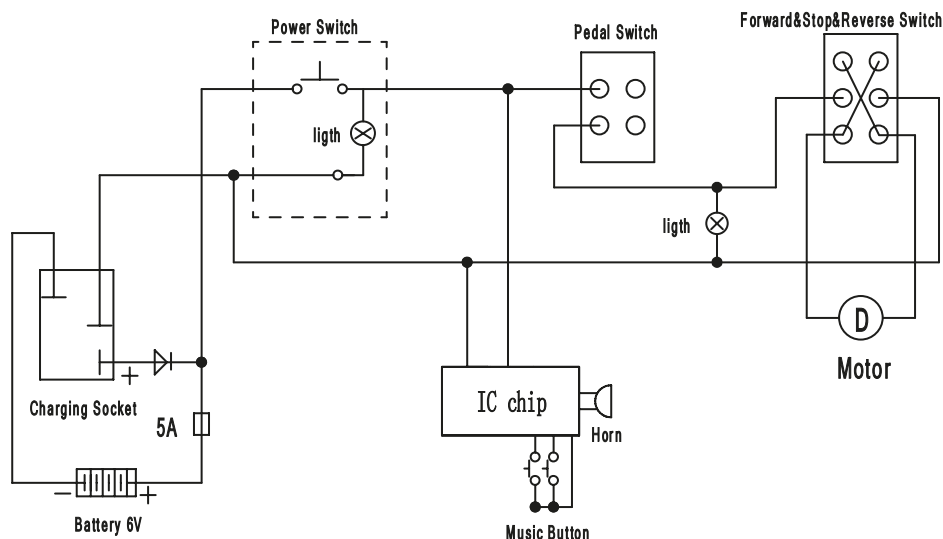
- Important! Before using the trike for the first time, the battery needs to be charged for 8 to 12 hours, no more than 20 hours. Only an adult can charge or recharge the battery.
- Finish assembly according to the steps that the manual described.
- All places that need a screw guarantee the screw has been locked.

Rules for Safe Riding

READ THESE RULES ALOUD TO YOUR CHILD AND THEIR PLAYMATES AND MAKE SURE THEY UNDERSTAND THEM!

- This toy has no brake. Always wear a helmet and protective clothing when riding.
- Direct Adult Supervision Required.
- Keep Children within Safe Riding Areas.
- Never use in roadway, near motor trikes, on lawn space, on or near steep inclines or steps, swimming pools or other bodies of water.
- Use the toy only on flat surfaces, such as inside your house, garden or playground.
- Never use in the dark. A child could encounter unexpected obstacles and have an accident. Operate the trike only in the daytime or a well-lit area.
- It is not recommended to drive the trike on wet surfaces or on slopes of greater than 15 degrees.
- Do not use this trikes outdoors when it is raining or snowing.
- Make sure you come to a complete stop before changing directions from forward to back.
- Please follow the correct weight and age limits allowed to drive this trike.
- It is prohibited to change the circuit or add other electric parts
- Inspect wires and connections of the trike periodically.
- In order to avoid accidents, please ensure the trike is safe before riding.
- Do not let any child touch the wheels or be near them when the trike is moving.

● How To Operate Your Trike



Charging Your Trike

ONLY AN ADULT CAN CHARGE AND RECHARGE THE BATTERY!

- non-rechargeable batteries are not to be recharged;
- different type of batteries or new and used batteries are not to be mixed;
- batteries are to be inserted with the correct polarity;
- exhausted batteries are to be removed from the toy;
- the supply terminals are not to be short-circuited.
- rechargeable batteries are only to be charged under adult supervision;
- The transformers or battery charger used with the toy are to be regularly examined for damage to the cord, plug, enclosure and other parts, and in the event of such damage, they must not be used until that damage had been repaired.
- The charger is not to be used by persons (including children) with reduced physical, sensory or mental capabilities, or lack of experience and knowledge, unless they have been given supervision or instruction.

⚠ WARNING!

• PREVENT FIRE AND ELECTRIC SHOCK:

- Use the only rechargeable battery and charger supplied with your trike. NEVER substitute the battery or the charger with another brand. Using another battery or charger may cause a fire or explosion.
- Do not use the battery or charger for any other product. Overheating, fire or explosion could occur.
- NEVER modify the electric circuit system. Tampering with the electric system may cause a shock, fire or explosion or may permanently damage the system.
- Do not allow direct contact between battery terminals. Fire or explosion can occur.
- Do not allow any type of liquid on the battery or its components.

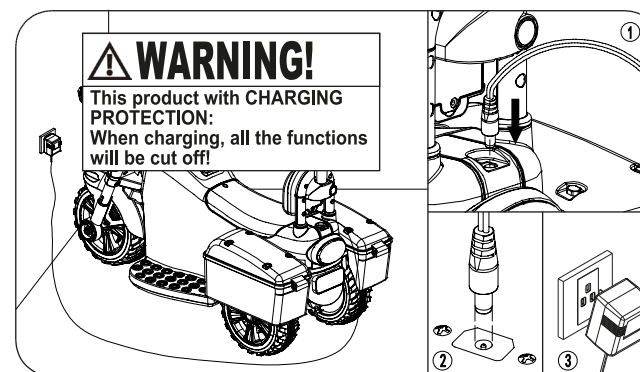
● Charging Your Trike

⚠ WARNING!

• PREVENT FIRE AND ELECTRIC SHOCK:

- Explosive gasses are created during charging. Do not charge near heat or flammable materials. Charge the battery in a well-ventilated area **ONLY**.
- NEVER pick up the battery by the wires or charger. Damage can occur to the battery and may cause a fire. Pick up the battery by the case **ONLY**.
- Charge the battery in a dry area **ONLY**.
- Wash hands after handling.
- Do not open the battery. Battery contains lead acid and other materials that are toxic and corrosive.
- Do not open the charger. Exposed wiring and circuitry inside case may cause electric shock. Only adults may handle or charge the battery. NEVER allow child to handle or charge the battery. Battery is heavy and contains lead acid (electrolyte).
- Do not drop the battery. Permanent damage to the battery could occur or cause serious injury.
- Before charging the battery, check for wear or damage to the battery, charger, its supply cord and the connectors. DO NOT charge the battery if any damage to parts has occurred.
- Do not allow the battery to drain completely. Recharge the battery after each use or once a month if not used regularly.
- Do not charge battery upside down.
- Always secure the battery with the bracket. Battery can fall out and injure a child if trike tips over.
- A recommendation for adult supervision of young children.
- The toy should be used with caution since skill is required to avoid falls or collisions causing injury to the user or third parties.

- The **POWER SWITCH** must not be pressed when charging
- Before the first use, you should charge the battery for 8-12 hours. Do not recharge the battery for more than 20 hours to avoid overheating the charger.
- When the trike begins to run slowly, recharge the battery.
- After each use or once a month minimum recharge time as 8 to 12 hours, no more than 20 hours.



1. Connector jack is located at the back beside the seat.
2. Plug into the jack
3. Plug in the adaptor pin into socket to start charging